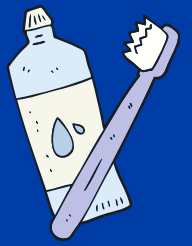


CMMS STEM CHALLENGE

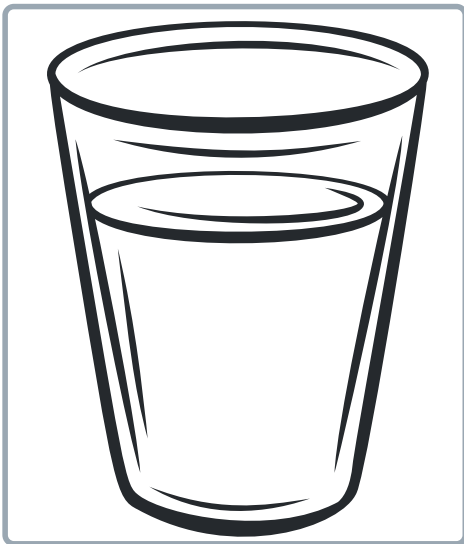
HARD-BOILED EGG HYGIENE CHALLENGE



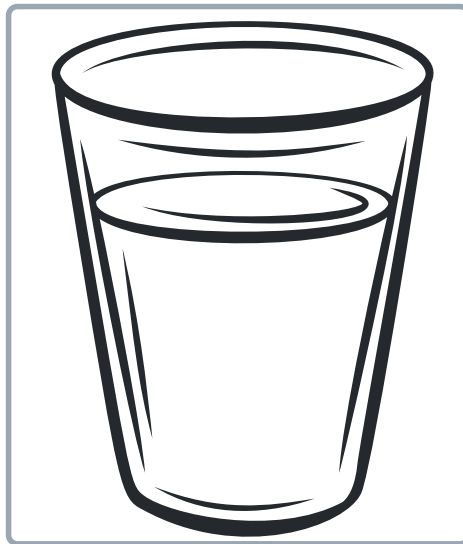
Hypothesis: What do you think will happen to the eggs in each cup?

Directions: Draw pictures to show what the eggs looked like after sitting in the cups overnight.

egg in vinegar



egg in dark soda



egg in coffee/tea



Conclusion: What were the results? Was your hypothesis correct?
